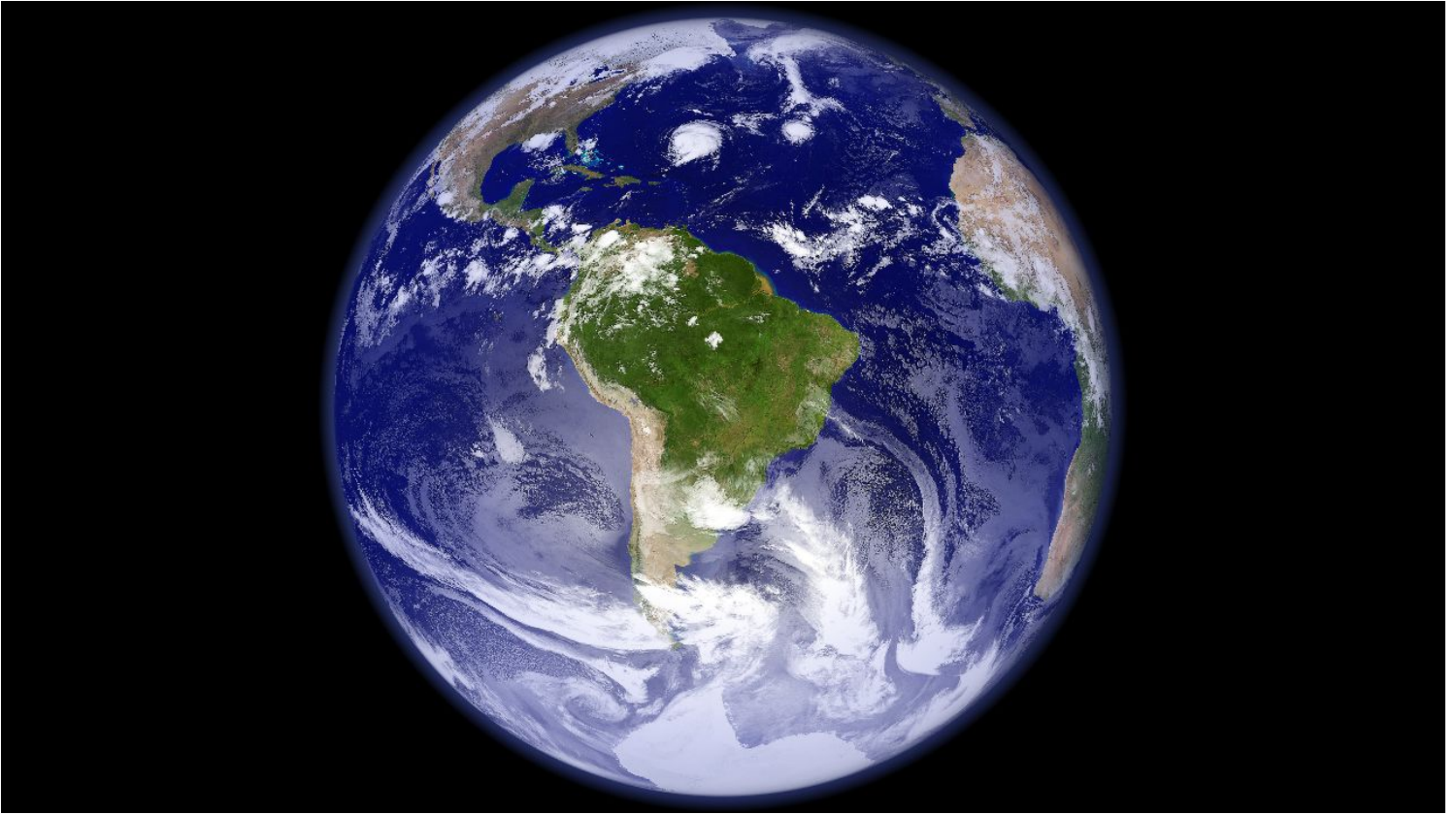


DARKNESS WAS OVER THE SURFACE OF THE EARTH



Gen. 1:2 *“And the earth was formless and void, and **darkness was over the surface of the deep**; and the Spirit of Yahveh was moving over the surface of the waters.”*

Talking about the atmosphere being dark at that time so that the light from the sun and moon couldn't penetrate the earth's atmosphere. Then in Gen. 1:15-16 it tells how the atmosphere was made so that the light from the moon and sun was allowed to light up the earth.

DASYD Ministry

Bible Commentary Jerry Hennig (Nov 28/16)