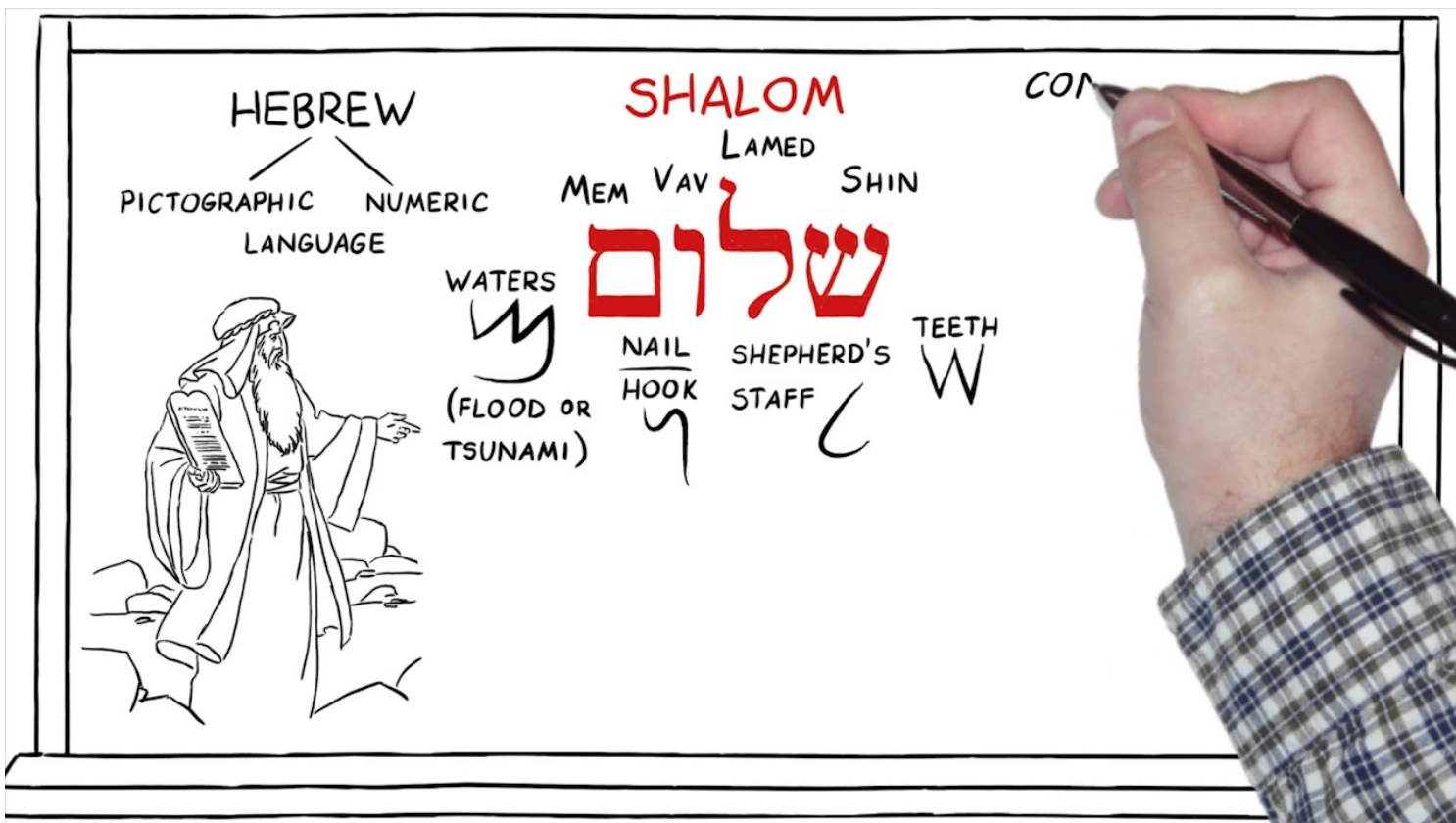


SHALOM:

Left to right: **Shin-Lamed-Vav-Mem**. Hebrew right to left: **Mem-Vav-Lamed-Shin**



There is no more common word in Hebrew than shalom. It is used everyday all day long by those who speak Hebrew. You could write a book on the meanings of that word. In the following, I will just scratch the surface of the meanings of this word:

- Shin** Teeth that crush and destroy
- Lamed** Shepherds staff
- Vav** Is a iron nail, or wooden hook
- Mem** Waters of life, or waters of chaos and confusion (tsunami)

Shalom can mean:

Not being at war.

Harmony between people.

Security and freedom from violence.

Shalom is the idea of serenity or tranquility

Shalom: destroy, voice of authority, two things connected, chaos and confusion

"Shalom only comes when the authority connected with chaos and confusion is destroyed"

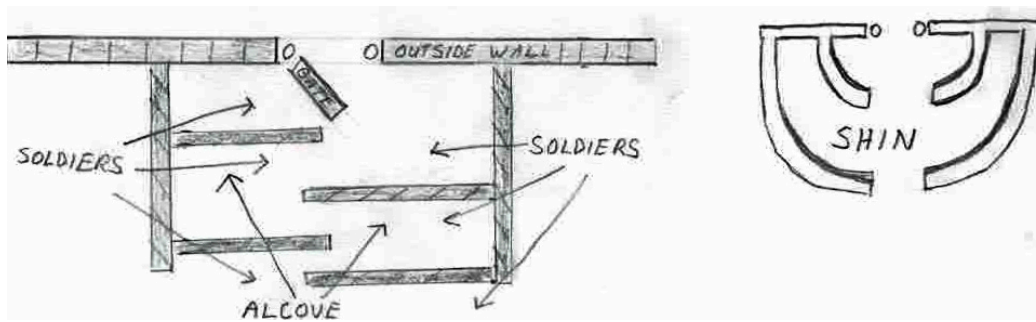
Every time you say shalom you are uttering a prophetic word; that you hope someone will come and destroy the one who is causing all the chaos and confusion.

Who is the destroyer?

EI Shaddai

In the name EI Shaddai (shad-dah-ee..07706), which comes from the root word "shadad" (07703), we see the letter shin. It is the only letter that is connected by itself. In the name EI Shaddai (aleph lamed, shin, dalet, yod), we have "the leader of instruction, the all consuming fire that **opens the door of power**". "Yah, **my destroyer**". We are not fighting the battle, He just wants us to recognize that we are in one. He fights the battles for us if we are obedient to His word. If you realize you are in a war then He can fight through you. If you don't even realize your in a war, how can you destroy your enemy.

Alcove



In ancient times the outside city gate opened up to a main lain which had 2-3 alcoves on either side of the passageway. These indentations in the walls are where the soldiers would stand during a battle in case someone broke through the gate. When intruders came threw the gate, these intruders were immediately confronted with soldiers who would come out of their alcove and **destroy** them. They were destroyers, protecting the community as a whole, the city. As depicted in the above sketch, the alcoves and their walls look like two shin letters facing each other (teeth) when rotated. **"The teeth that destroy with power"**.

The great leaders, warriors of that age, were gauged on how quickly their soldiers could break threw the city gate and overtake the destroyers hidden in the alcoves just inside the gate. If they could power threw the gate and overwhelm the destroyers quickly, they were known as great and mighty commanders. The word "Almighty" God comes from this idea. The Almighty Yah; "El Shaddai", could break through the barriers, bondages, gates of evil to come and set His people free. He was and is the "Mighty Deliverer". There is no door, no gate to any power that exists that He cannot blow open and siege for us, if we love Him and obey His word.

The shin is seen on the mezuzah

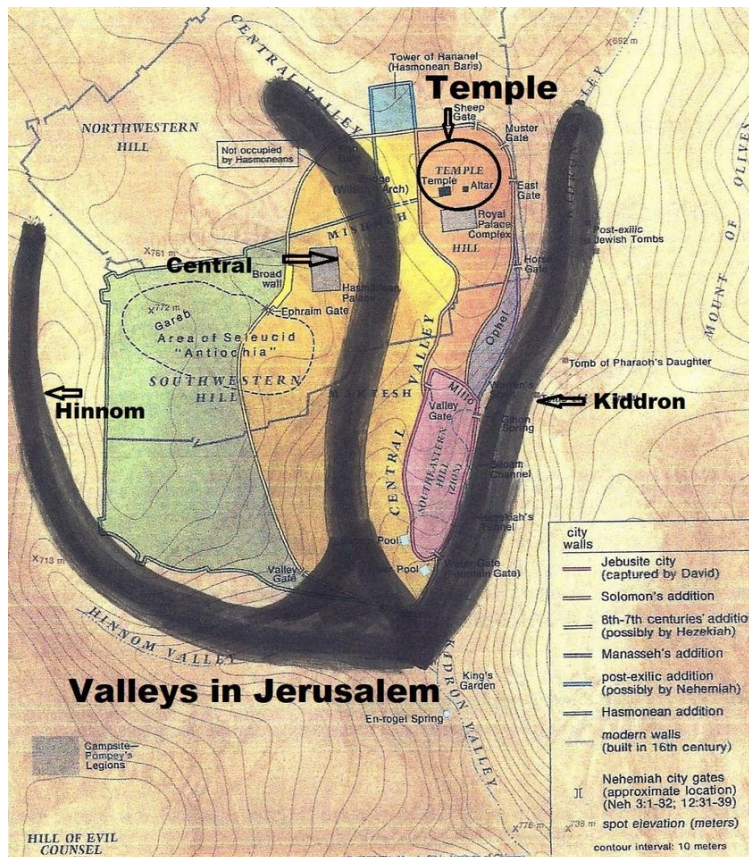
Shaddai is the letter shin. Every mezuzah you see has the letter shin on it which represents El Shaddai. When we understand the idea of the destroyer shin letter, we realize why when we establish the mezuzah (shin) on the outside of our homes, it stands for two distinct and different things:

- 1) Anyone that works for the enemy realizes that this home is protected by the Almighty Destroyer, the El Shaddai, Holy One of Israel, and to step across the threshold of that home to cause problems is putting one at terrible risk. This is "Holy Ground" so to speak (Acts 7:33). El Shaddai protects us on this Holy Ground.
- 2) To El Shaddai, it says You are welcome in this home, come in and be with Your people. You are inviting Yahveh into your home. Likewise, to the servants of El Shaddai, you are saying the same thing. You are welcome to come into this home, you need not break the door down.

Jer. 51:55-56 For Adonai is going to **destroy** (07703) Babylon, And He will make her loud noise vanish from her. And their waves will roar like many waters; The tumult of their voices sounds forth. 56 For the **destroyer** (07703) is coming against her, against Babylon, And her mighty men will be captured, Their bows are shattered; For Adonai is a God of recompense, He will fully repay."

In the following two passages we see both a blessing and a curse written about. **Gen. 28:3** "And may Yahveh **Almighty** (07706) bless you and make you fruitful and multiply you, that you may become a company of peoples."

Ruth 1:20 And she said to them, "Do not call me Naomi; call me Mara, for the **Almighty** (07706) has dealt very bitterly with me." Yah can bless you abundantly or He can be the all consuming fire that can destroy you if He wishes, according to your actions. When you think back to what happened at Mt. Sinai, it was a fire that was upon the mountain. The same type of fire that occurred at Shavuot. It



is common to think of fire as being terrible, we think of hell and brimstone, etc., but Yah's fire is for cleansing, renewing, rebuilding what had to be destroyed.

The valleys surrounding the Temple Mount

The shin is also seen when laid out over the three valleys (Kidron, Central, and Hinnom) in the city of Jerusalem, which includes the Temple Mount.

The shin forms the valleys ש surrounding the temple mount (HiShekhinahnom, Central and Kidron valleys) in Jerusalem where Yah's name is written and the placement of the temple is shown, on the upper right hand dot on the Shin which is called "a Shin dot" (ש).

The shin resembles a believer with hands in the air.

It is in the name "El Shaddai (God Almighty which is a consuming fire - Deut 9:3, Heb 12:29), and also in the Name Yeshua (ישוע) pointing to the Menorah (Tree of life) or the 7 branch golden lamp-stand of the Tabernacle/ Temple and the Set Apart Spirit (Ruach HaKodesh) (Isa. 11:2)

The shin sign forms the crown of Yeshua our King

The shin sign forms the symbolic crown of the King Messiah, and our hearts where the laws are to be written with the finger of Elohim in the Renewed Covenant. (Hebr. 8:8-12) (Shin is also one of the seven letters which receive special crowns (called tagin) when written in a Sefer Torah.

The shin resembles the chambers of our heart.

The shin resembles the chambers of the human heart ש. It also shows a picture of a being, getting the breath of life (Ruach) from "Yeshua" / "The Breath Of Life". The two lungs receiving the breath from Yeshua/YHWH, and the heart which the two lungs are hosting and protecting. The heart shin pumps the life' (The life is in the blood Lev 17:11) and the two lungs and heart form the shin sign.

Ps. 24:3 "Who may go up to the mountain of ADONAI? Who can stand in his holy place?"

4 Those with clean hands and pure hearts, who don't make vanities the purpose of their lives or swear oaths just to deceive". It all points to Yeshua, the breath of life, our Tree of Life (Menorah), our Shalom, Prince of Peace (Shalom containing the first letter shin), our High priest, and King. Yeshua imprinted the Hebrew Shin ש on our hearts.

The shin can be seen imprinted on our hand.

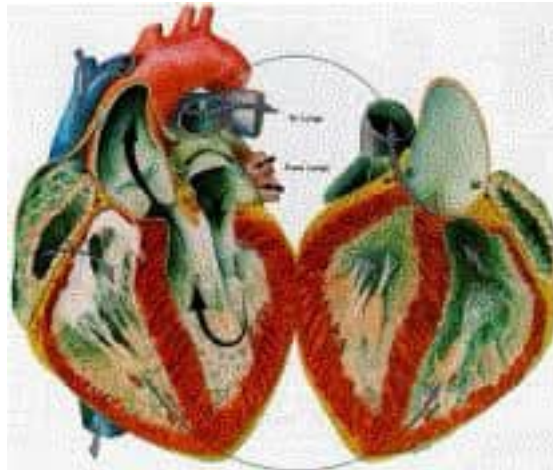


**ORIGINALLY DRAWN AS
A FLAME OF FIRE OR A CROWN
AS A PREFIX IT MEANS "ONE WHO"**



SHIN IS THE FIERY GLORY OF GOD'S PRESENCE

The shin/ ש is imprinted in our hand, to do the commandments of Yahweh. Shema Israel - "Hear and Do Israel".



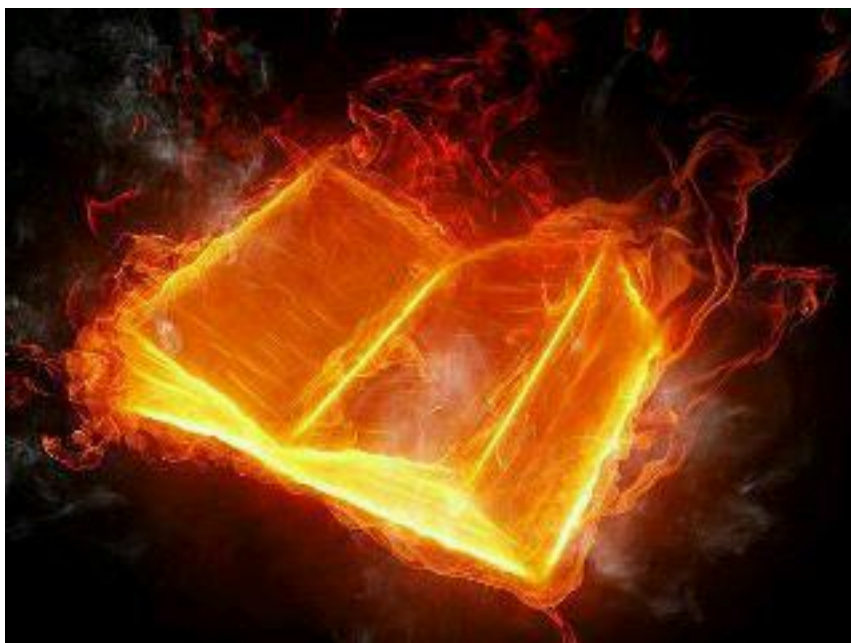
FIRE

There are two purposes for fire, it can be positive and it can be negative. In its most basic form, fire takes complex, dense matter made up of many atoms and reduces them to a more simpler form, mainly gases. It produces LIGHT and HEAT. You need light during the dark, and you need heat during the cold.

The expression "I'm on fire" or "I have fire in my bones" is describing the positive fire that comes upon a person who is being cleansed, purified, by the Ruach, moving closer and closer to Yah. **Exod. 3:2** *And the angel of Yahveh appeared to him in a blazing fire from the midst of a bush; and he looked, and behold, **the bush was burning with fire, yet the bush was not consumed.*** The bush (tree) represents His people. Yah wants to light us on fire and speak through us to His people.

Lev. 16:12 *"And he shall take a firepan full of coals of fire from upon the altar before Adonai, and two handfuls of finely ground sweet incense, and bring it inside the veil." We are to be like the coals of the altar fire used to ignite*

Rom. 12:20-21 "BUT IF YOUR ENEMY IS HUNGRY, FEED HIM, AND IF HE IS THIRSTY, GIVE HIM A DRINK; FOR IN SO DOING YOU WILL HEAP BURNING COALS UPON HIS HEAD." Do not be overcome by evil, but overcome evil with good." Many people believe that in this verse we see that if we do good to those who are evil to us it will make them mad, this is not what this means. That may



indeed happen, but it actually means the exact opposite. Coals of fire was a well known phrase used by first century rabbis to describe the ultimate fire of the brazen altar. The High priest would take the coals from the altar, scoop them up in a pan, put them in a censor, then bring them through the veil to the altar of incense in the Holy Place. Those coals were used to burn the incense, which then caused the glory of Yah to shine. So this means when you do good to your enemy, it is as if you are taking the coals from the altar and putting them on their head, which becomes the altar of incense, and therefore will burn away any dross, worthless rubbish in their life. Their life will then become a sweet savour before Yah.

Acts 2:3 And there appeared to them tongues as of fire (shin) distributing themselves, and they rested on each one of them." The tongues of fire here, in Hebrew, represent the letter shin. This is the sign the priests used with their hands while speaking the Aaronic blessing.

Acts 2:11 Cretans and Arabs — we hear them in our own tongues speaking of the mighty deeds of God." When you have the fire of Yah inside of you, you will declare the wonderful works of Elohim. El



Shaddai, (all consuming fire) fire brings death and life. **Exod. 32:28** So the sons of Levi did as Moses

*instructed, and about **three thousand** men of the people fell that day."*

Acts 2:41 *So then, those who had received his word were baptized; and there were added that day about **three thousand** souls."*

James 1:26 *If anyone thinks himself to be religious, and yet does not **bridle his tongue** but deceives his own heart, this man's religion is worthless."*

What are the attributes of fire?



Positive (love, purifying, zeal)

Fire starts with friction. Negative friction happens when one rubs themselves up against someone else in a negative way. It creates a fire in their life. At the same time, if you look at that person with Yah's eyes you will see that fire is a holy thing, good, when used properly. When you experience this fire, you must think love. Loving someone creates fire in your heart and in their heart. Friction fire is a good thing, but it can also be a bad thing. Fire never keeps to itself, it is always moving, consuming things around it. Negative fire will ignite a lot of people. Positive fire will also ignite people. Fire divides holy from unholy, never holy from holy. Fire is what purifies us.

Fire seeks to consume. It's design is to bring you to acute focus. Fire by itself is designed to consume everything around it. It reduces everything around it to its lowest form, as in ashes. When you have, or experience the fire of Dad in your life, it destroys (consumes) everything in your life that is not of Him. Fire produces light and the enemy cannot exist in the presence of light. Fire comes out from Adonai's throne. Remember when Dad sent fire to destroy Aaron's two sons because of the way they made a sacrifice? They chose to come near the throne of Dad with impure hearts, therefore they were destroyed. Yahveh is a pillar of fire. If you dare to get close to Him you must be willing to die in the process. The closer you get in your relationship with Dad the more intense the heat is. To come close to Him you better have your heart in the right place. If you are not holy, you will die in His presence. This is what is going to happen on judgment day, we will be consumed by the Lake of Fire, or we will be transported to Heaven, according to the deeds of our heart. The only thing that protects you is the blood of the lamb. Abba came as the destroyer in the tenth plague in Egypt when all the first-born, who were not under the blood, were destroyed by El Shaddai, the all consuming fire. When we are covered by the blood we have a shield that protects us from being destroyed by fire. Yeshua is

the beginning of love for us. We must understand this love that Yah made available through His Son, but we must not stagnate there. We are to move on beyond this to the weightier things in life (Hebr. 6:1). The highest form of love is when we die for someone else is it not?

Fire divides.

The fire for the Temple altar sacrifice was almost always fig wood. Why? Because fig wood represents the nations of people.

Fire usually burns wood, trees. What are trees symbolic of in scripture, people. Fire divides people. Just as the sword of the spirit divides. Again we see things happen in the physical and then likewise in the spiritual.

Our Abba is an all consuming fire. When we look at fire through the message of shin we see many things.

Many christians, because they don't read the front of the book, think only of the fire and damnation written about in the Book of Revelation. They don't realize fire is clearly written about in the Old Testament as a attribute of Yahveh.

From Yah's throne come three things that keep this earth alive; fire, water and air. The river of life comes out from the Temple in the New Jerusalem. The river is designed to also consume you and bring forth new life. The Lake of Fire in revelation destroys and consumes all those who are sent to it.

Dan. 7:9 "I kept looking Until thrones were set up, And the Ancient of Days took His seat; His vesture was like white snow, And the chair of His head like pure wool. **His throne was ablaze with flames, Its wheels were a burning fire.**



Rev. 1:14 *And His head and His hair were white like white wool, like snow; and His eyes were like a flame of fire;"*

Exod. 13:21 *And Elohay olam (everlasting Yahveh) was going before them in a pillar of cloud by day to lead them on the way, and in a pillar of fire by night to give them light, that they might travel by day and by night." Symbolically, the throne of Yah was leading them.*

Deut. 4:11 *"And you came near and stood at the foot of the mountain, and the mountain burned with fire to the very heart of the heavens: darkness, cloud and thick gloom."*

Negative (Hell, lake of fire, punishment)

Rev. 20:14 *And death and Hades were thrown into the lake of fire. This is the second death, the lake*

of fire."

Luke 9:54-56 *And when His disciples James and John saw this, they said, "Yahveh, do You want us to command fire to come down from heaven and consume them?" 55 But He turned and rebuked them, [and said, "You do not know what kind of spirit you are of; 56 for the Son of Man did not come to destroy men's lives, but to save them."] And they went on to another village." The disciples were referring to what Elijah did in the past. Yeshua was pointing out that only the spirit of Hasatan wants fire to destroy in such a manner. The Spirit of Yahveh wants fire to save people and help them understand what they are doing wrong so they can correct it. We may hate what some people (enemies) do and say, but we should not want them destroyed. We should be praying for them. Pray for your enemies, but expose them (evil). We should never damn or condemn our enemies.*

In the following message of James we see the letter shin wrapped up.

James 3:1-18 *"Let not many of you become teachers, my brethren, knowing that as such we shall incur a stricter judgment. 2 For we all stumble in many ways. If anyone does not stumble in what he says, he is a perfect man, able to bridle the whole body as well. 3 Now if we put the bits into the horses' mouths so that they may obey us, we direct their entire body as well. 4 Behold, the ships also, though they are so great and are driven by strong winds, are still directed by a very small rudder, wherever the inclination of the pilot desires. 5 So also the tongue is a small part of the body, and yet*



*it boasts of great things. Behold, how great a forest is set aflame by such a **small fire!** 6 And the tongue is a fire, the very world of iniquity; **the tongue is set among our members as that which defiles the entire body, and sets on fire the course of our life, and is set on fire by hell.** 7 For every species of beasts and birds, of reptiles and creatures of the sea, is tamed, and has been tamed by the human race. 8 **But no one can tame the tongue;** it is a restless evil and full of deadly poison. 9 With it we bless our Elohim and Father; and with it we curse men, who have been made in the*



*likeness of Elohim; 10 **from the same mouth come both blessing and cursing.** My brethren, these things ought not to be this way. 11 Does a fountain send out from the same opening both fresh and bitter water? 12 Can a fig tree, my brethren, produce olives, or a vine produce figs? Neither can salt water produce fresh. 13 Who among you is wise and understanding? Let him show by his good behavior his deeds in the gentleness of wisdom. 14 But if you have bitter jealousy and selfish ambition in your heart, do not be arrogant and so lie against the truth. 15 **This wisdom is not that which comes down from above, but is earthly, natural, demonic.** 16 For where **jealousy and selfish ambition exist,** there is disorder and every evil thing. 17 But the wisdom from above is first pure, then peaceable, gentle, reasonable, full of mercy and good fruits, unwavering, without hypocrisy. 18 And the seed whose fruit is righteousness is sown in peace by those who make peace".*

The tongue, the mouth, the two front teeth of shin are all connected to the all consuming fire of Yah as explained in James 3. Our tongue is a fire that can destroy the enemies plans with words of authority in Yeshua's name. It can also be used by the enemy to causes curses to put people in bondage for life. Our tongue can be a blessing or a curse depending on whether the Holy Spirit or the counterfeit spirit is using it. The letter shin is the tooth that is used to consume with fire all things in us that are not in line with His Word, so that we can be set free. The fire may hurt as it consumes our fleshly ways, but the fire also sets us free. It will feel good when it's over.

DASYD MINISTRY "DO AS YESHUA DID" dasydministry.org Jerry Hennig (Sept/21)
excerpt from HA Book.